

# US 51 STUDY IN CLINTON

## Public Information Meeting



June 30, 2003



# WELCOME

## To Public Meeting #2

### For the US 51 Study in Clinton

- Thank you for your great participation at meeting #1!
- Your input was very valuable in developing and evaluating the 14 preliminary alternatives.
- We look forward to receiving your feedback on the 5 remaining refined alternatives.





# PURPOSE OF THIS MEETING

1. Briefly Review Project Status

2. Present the Alternatives

3. Obtain Your Feedback

– Comment Forms







# STUDY OBJECTIVES

1. Examine the current and future traffic and transportation conditions on US 51
2. Determine where (or if) there are problems or deficiencies
3. Define project issues and goals
4. Develop a range of alternative improvements
5. Evaluate and compare the proposed alternatives (including the no-build option)
6. Recommend a preferred alternative or set of alternatives for implementation



# PROJECT GOALS

1. Enhance vehicle and pedestrian safety
2. Mitigate the negative impacts of heavy truck traffic on US 51, while maintaining an efficient through route
3. Maintain appropriate traffic controls and traffic flow
4. Preserve downtown business, while enhancing overall economic development opportunities
5. Improve highway geometry and drainage
6. Avoid, minimize, and/or mitigate property takings as well as other community and environmental impacts
7. Facilitate improved regional connections to the Purchase Parkway and the proposed I-66





# STUDY PROCESS / SCHEDULE



# EVALUATION PROCESS

*Alternatives*

*Performance Measures*

**Level 1**

**All Possibilities**

**Initial Review**

**Level 2**

**Conceptual**

**Screening Analysis**

**Level 3**

**Refined**

**Detailed Analyses**

*Recommendation (s)*

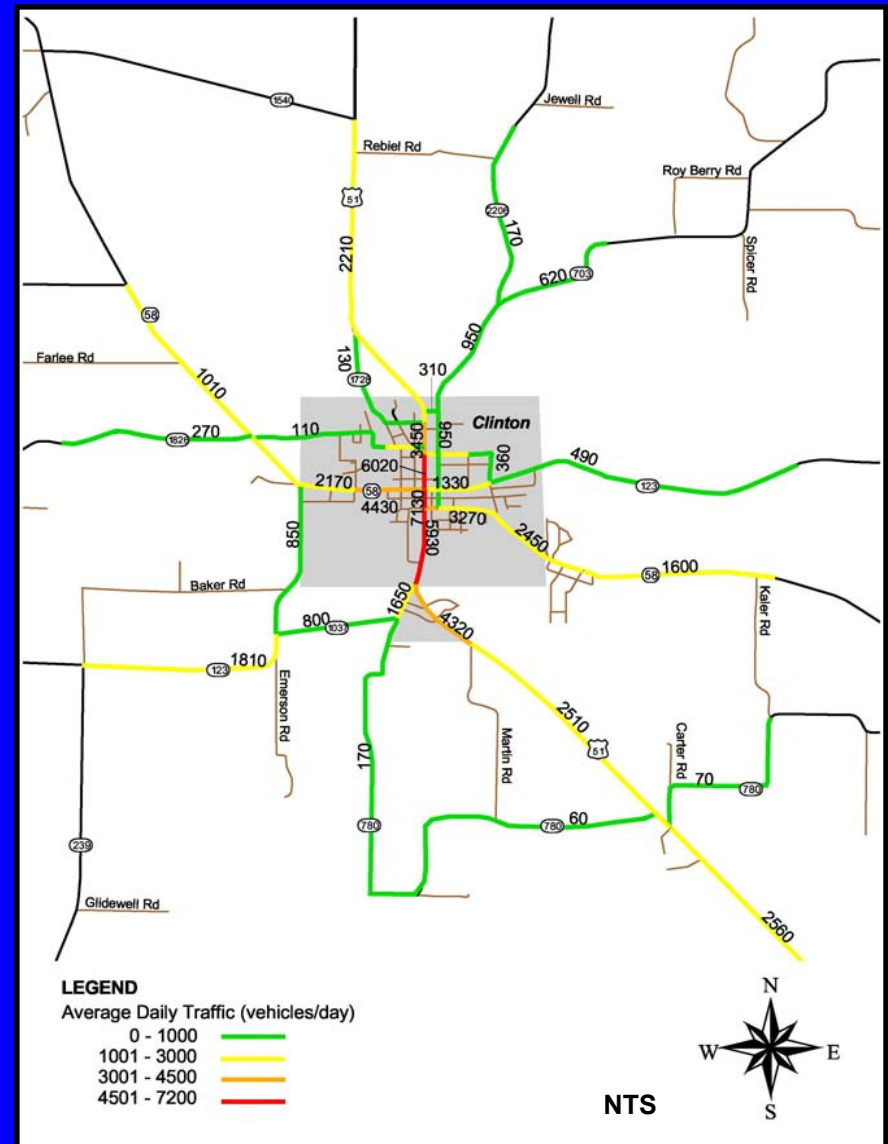




# EXISTING TRAFFIC VOLUMES

## Traffic Volumes

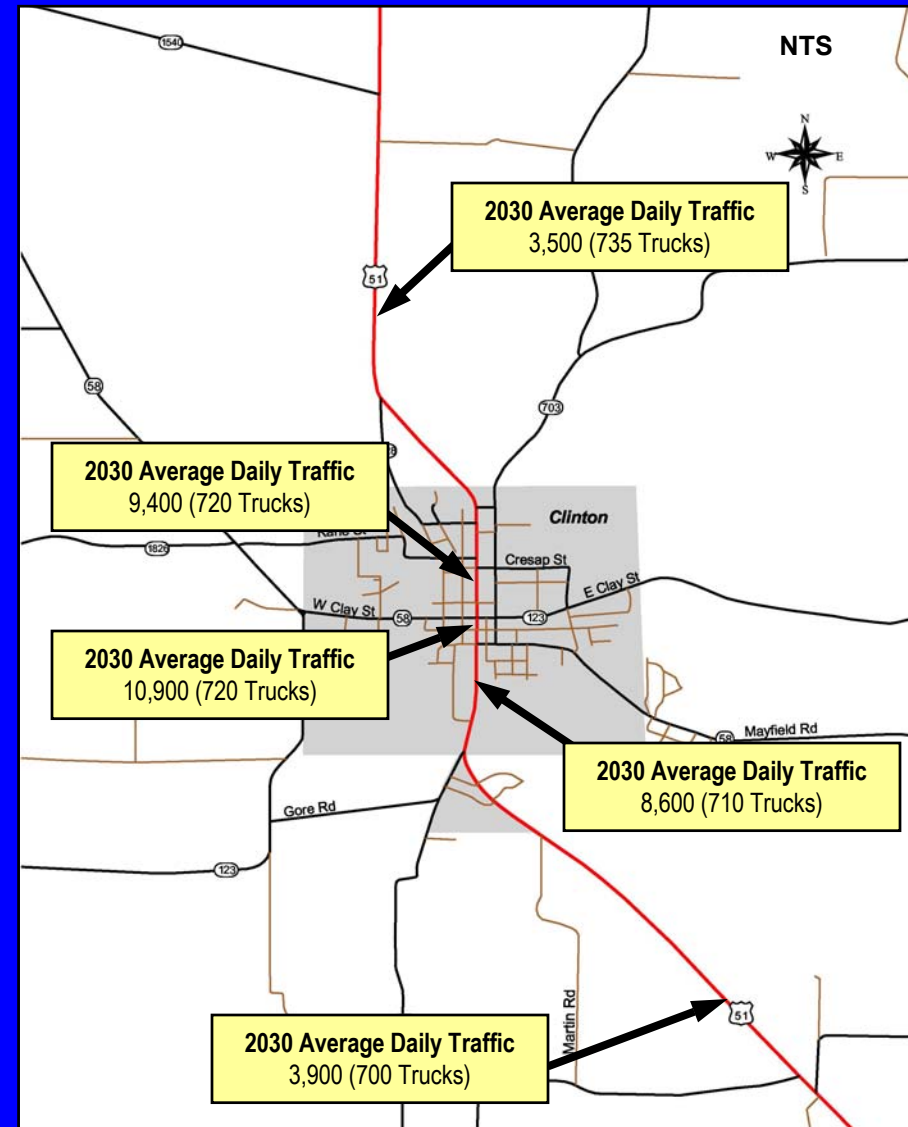
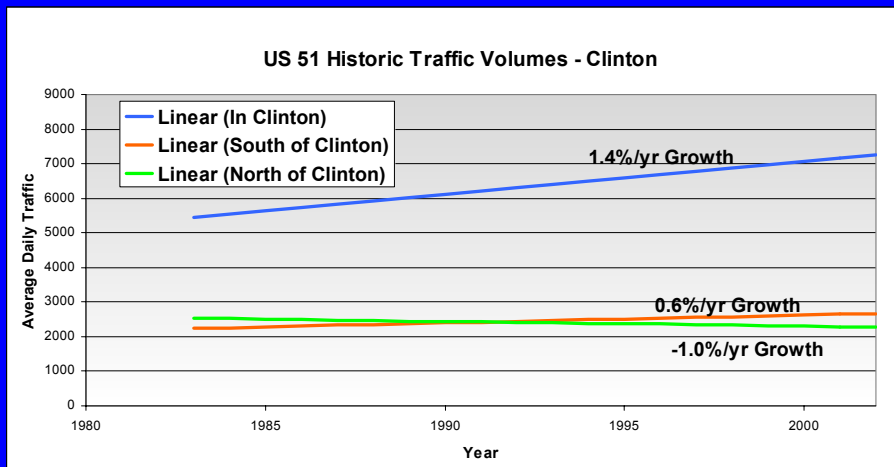
- Low Volumes Except on US 51 in Town
- Approx. 2,500 Through Trips on US 51
- Approx. 500 Through Truck Trips on US 51



# FUTURE TRAFFIC VOLUMES

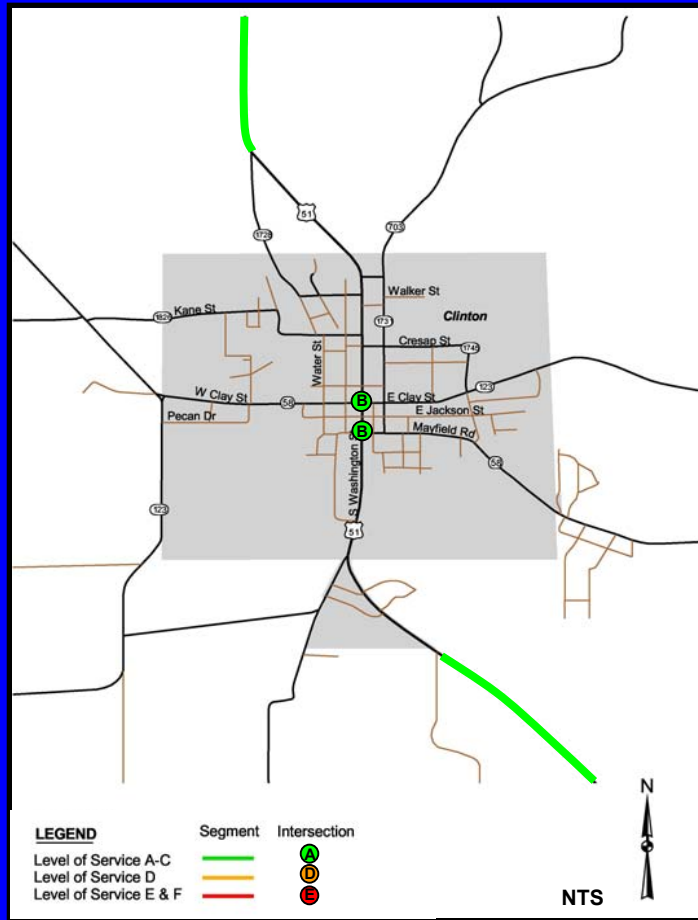
## Traffic Volumes

- Volumes Peak at US 51 / KY 123 / KY 58 in Town
- Through Traffic on US 51 Estimated at Approx. 3,700 Trips
- Through Truck Traffic on US 51 Estimated at Approx. 700 Trips
- Assumed 1.5% Annual Growth (Overall Historic Growth from 1983 to 2003 is 0.5% Annually, Population is Declining)



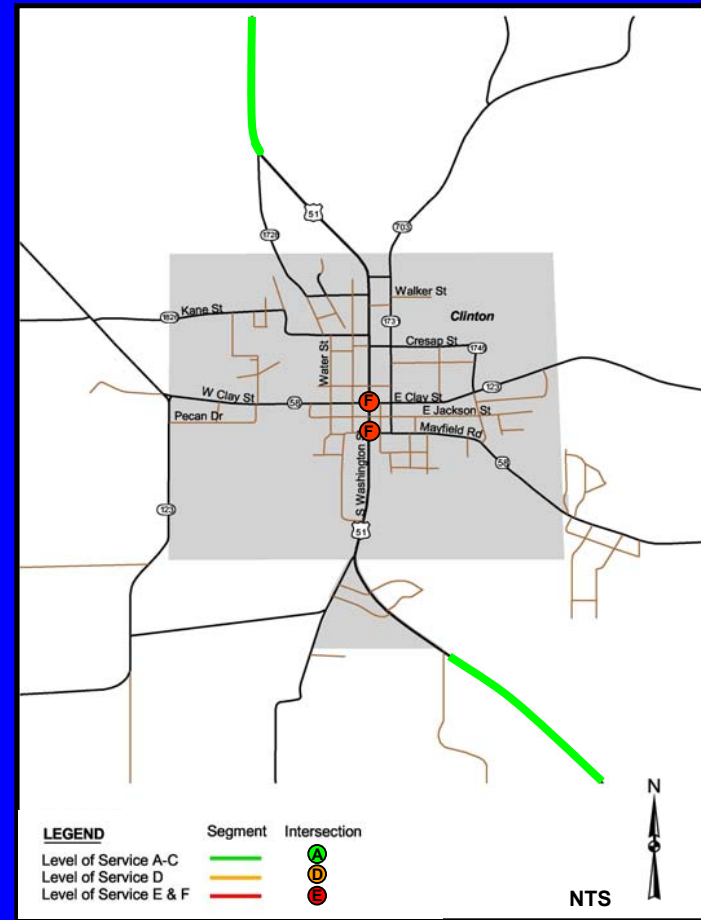


# EXISTING AND FUTURE TRAFFIC CONDITIONS



**2002 LOS**

**No Deficiencies**



**2030 LOS**

**Intersections in Town Degrade to Undesirable LOS Without Intersection Improvements**





# LEVEL 1 ALTERNATIVES ANALYSIS

## Level 1 – Initial Screening

- 14 Preliminary Alternatives
- Alternatives 4B, 5B, 6B, 7, 8B and 8C Dismissed

### Alternative 4B

- Community Impacts, Safety, Prefer 4A

### Alternative 5B

- Environmental Impacts, Length, Prefer 5A

### Alternative 6B

- Environmental Impacts, Geometry, Prefer 6A

### Alternative 7

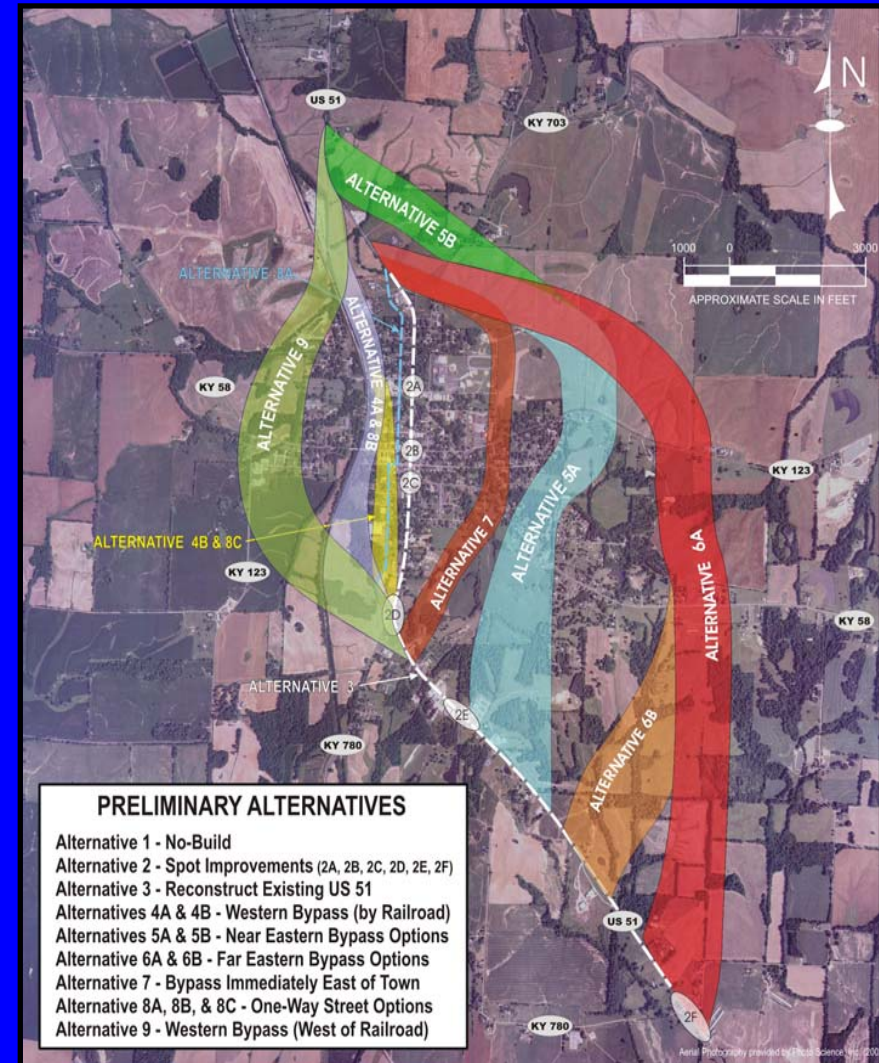
- Community Impacts, Low Public Support

### Alternative 8B

- Environmental Impact, Traffic Flow, Prefer 8A

### Alternative 8C

- Community Impacts, Traffic, Safety, Prefer 8A



# LEVEL 2 ALTERNATIVES ANALYSIS

## Level 2 – Preliminary Analysis

- 8 Alternatives Advanced From Level 1
- Alternatives 4A, 5A, 8A and Spot Improvements 2D, 2E, and 2F Dismissed

### Alternative 4A

- Environmental Impacts (Streams, Floodplain, wetlands) Environmental Justice, In-Town

### Alternative 5A

- Community / Environmental Impacts

### Alternative 8A

- Construction Difficulty, Community Impacts, Traffic Flow, Safety Issues

### Alternative 2D

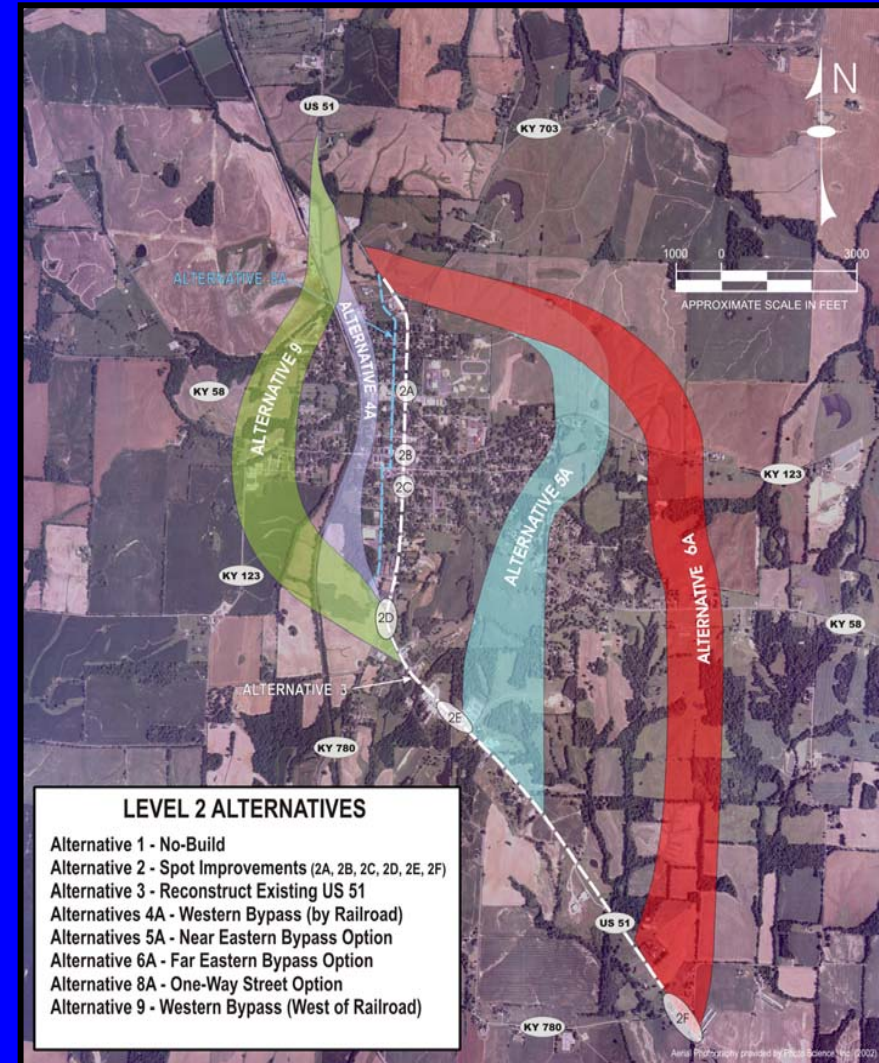
- Crash Data Does Not Warrant Improvements

### Alternative 2E

- Low Side Street Traffic Volumes, High Cost

### Alternative 2F

- Low Side Street Traffic Volumes, High Cost

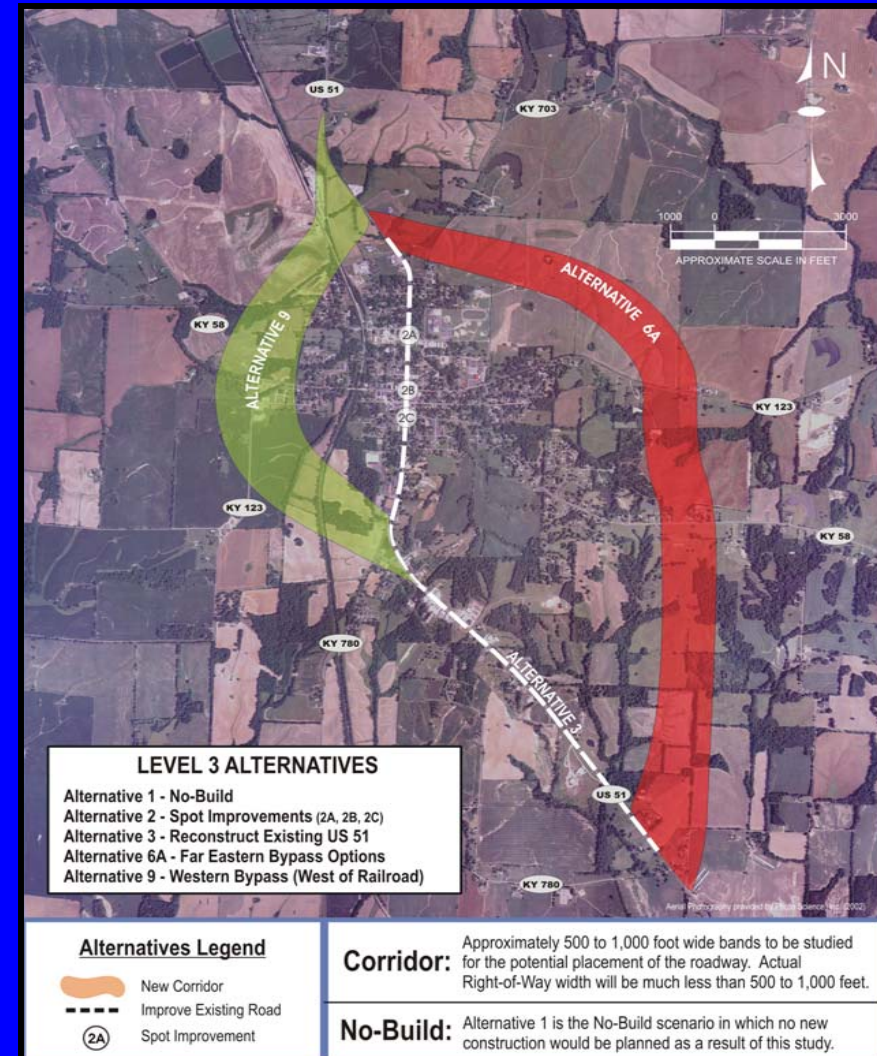




# LEVEL 3 ALTERNATIVES ANALYSIS

## Level 3 – Detailed Analysis

- 5 Alternatives Advanced From Level 2
- Alternative 2 Includes Three Spot Improvements
- Posted Throughout the Room



# WE WANT YOUR INPUT

## Comment Forms

- Rate the 5 Remaining Alternatives
- Short-Term Recommendations
- Long-Term Recommendations
- Identify the Worst Remaining Alternative
- Provide Additional Comments on Any of the Refined Alternatives





# THANK YOU

Thank you for attending, we value your input!

If you have further questions or comments please contact:

Charles David Martin, P.E.  
Division of Planning  
Kentucky Transportation Cabinet  
Tel: 502-564-7183 ext. 4412

Or write to:

Annette Coffey, P.E., Director  
Division of Planning  
Kentucky Transportation Cabinet  
125 Holmes St.  
Frankfort, KY 40622

